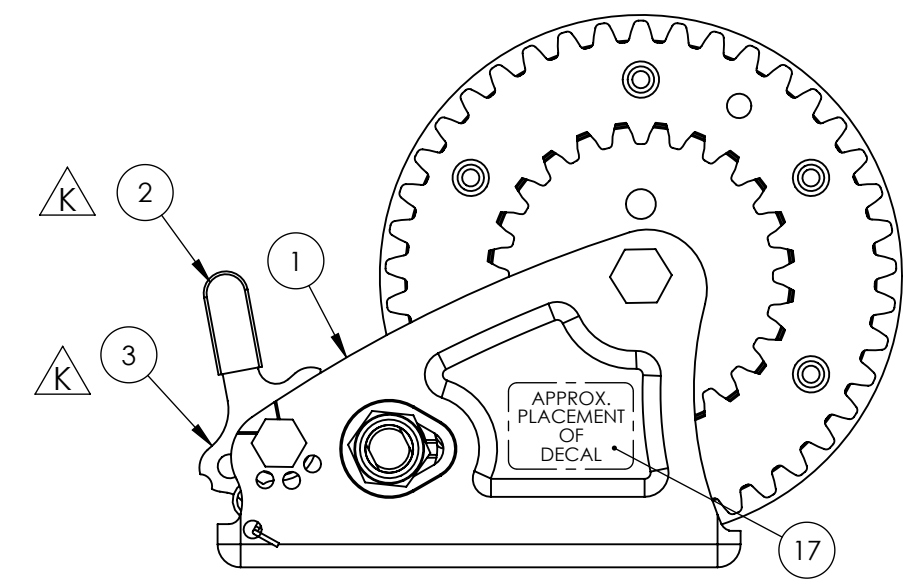
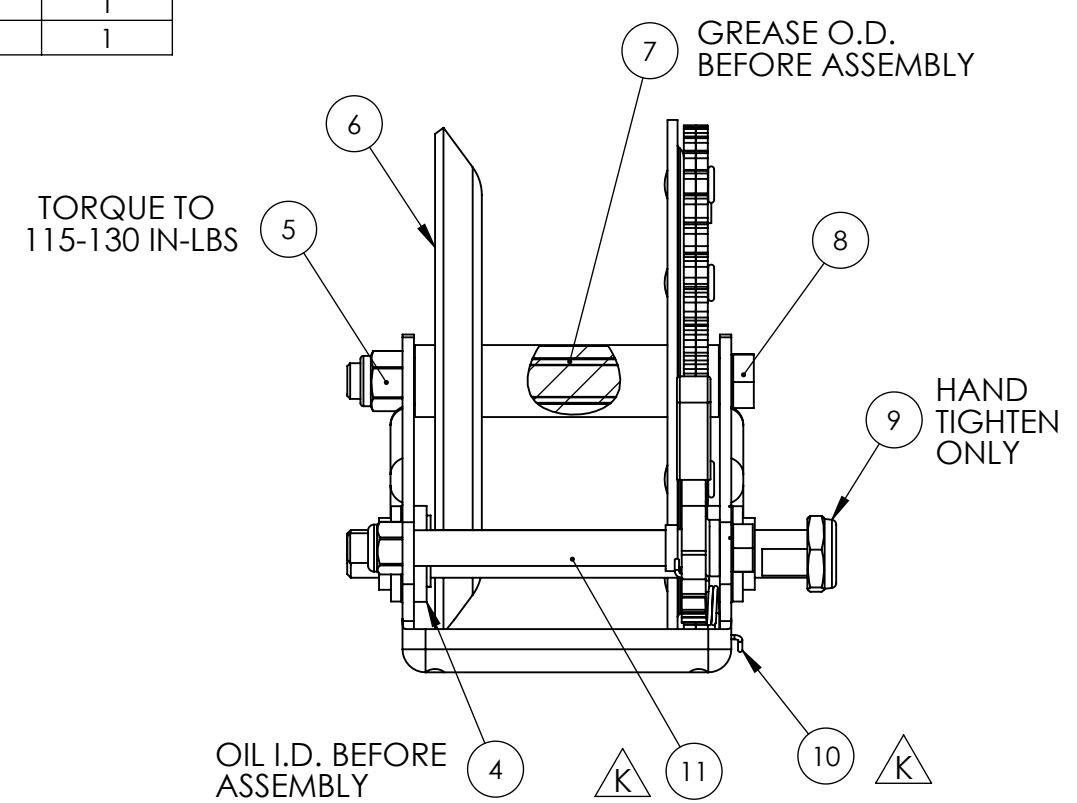
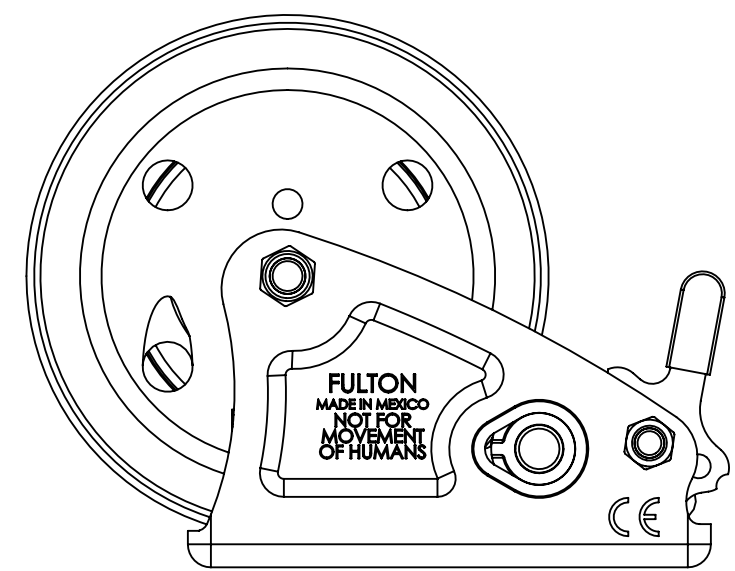
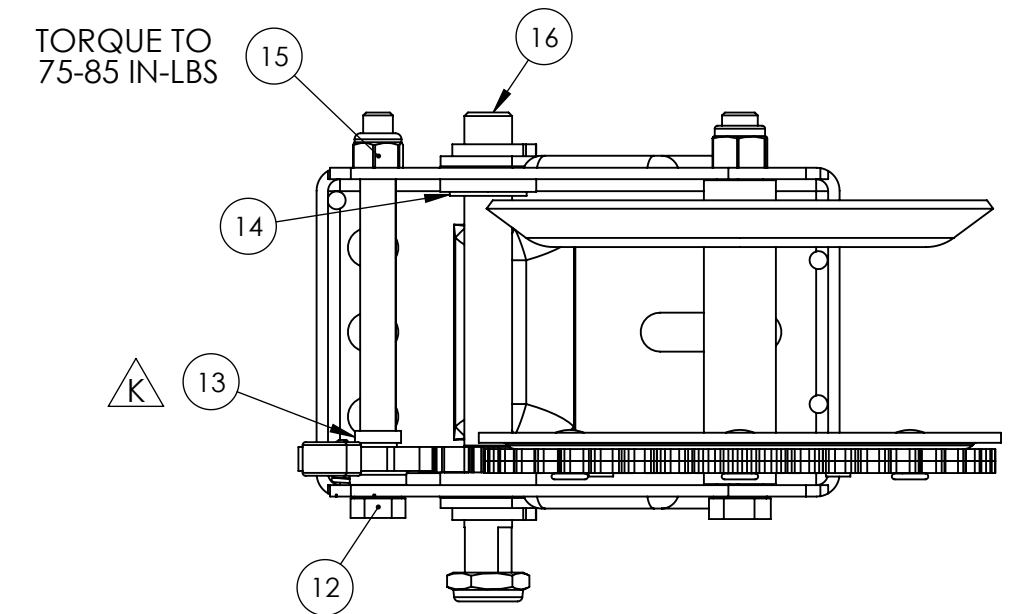
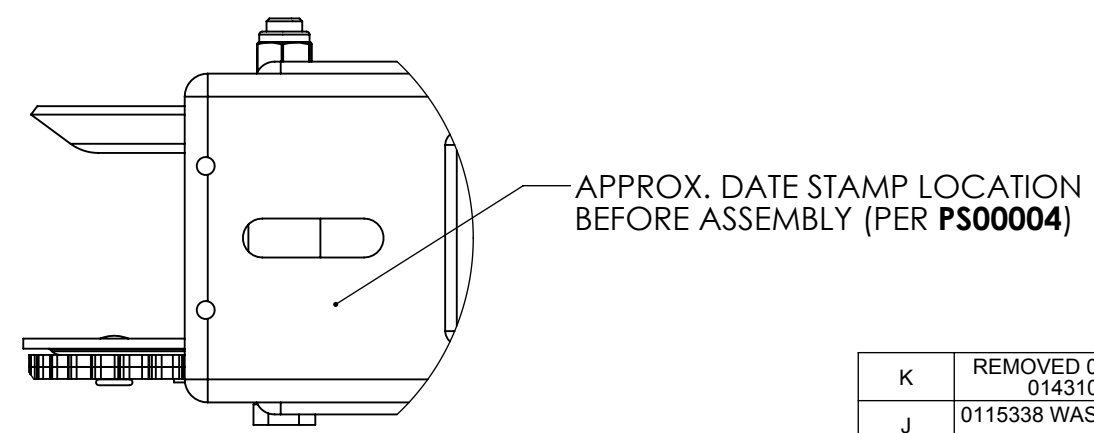


ITEM	PART NO.	FINISH	DESCRIPTION	QTY.
1	0115338	01	FRAME - T1100/T1300/T1500	1
2	0142101	00	CAP-RUBBER, 2-WAY RATCHET	1
3	0141107	01	RATCHET PAWL-2 WAY W/SHOULDER	1
4	0143101	01	BUSHING P/M - .50 ID	2
5	0527047	01	NUT-3/8-16 HEX NYLOK	1
6	8850	01	DRUM 41-TOOTH	1
7	0131116	00	SPACER-SPLIT .485 OD X .383 ID X 3.207 LG	1
8	4148	01	HEX CAP SCREW 3/8-16 X 4.0 LG GR2	1
9	0927021	01	LOCKNUT - 1/2-13 NYLON INSERT JAM	1
10	4769	28	SPRING - RATCHET, TWO-WAY	1
11	0131124	01	SPACER-SPLIT .372 OD X .327 ID X 2.632 LG	1
12	223	01	HEX CAP SCREW 5/16-18 X 4.0 LG GR5	1
13	0143108	01	BUSHING, Ø.480 X .44 LG	1
14	936	24	RETAINING RING - 1/2" DIA SHAFT	1
15	0427004	01	LOCKNUT - 5/16-18 NYL INS	1
16	0169003	41	PINION GEAR AND SHAFT	1
17	F3800	00	DECAL - FULTON WINCH - SMALL	1



NOTES:
- DRUM MUST TURN AT LEAST ONE FULL REVOLUTION BY HAND IN BOTH DIRECTIONS.
- ALL TORQUE VALUES ARE FOR REFERENCE ONLY.

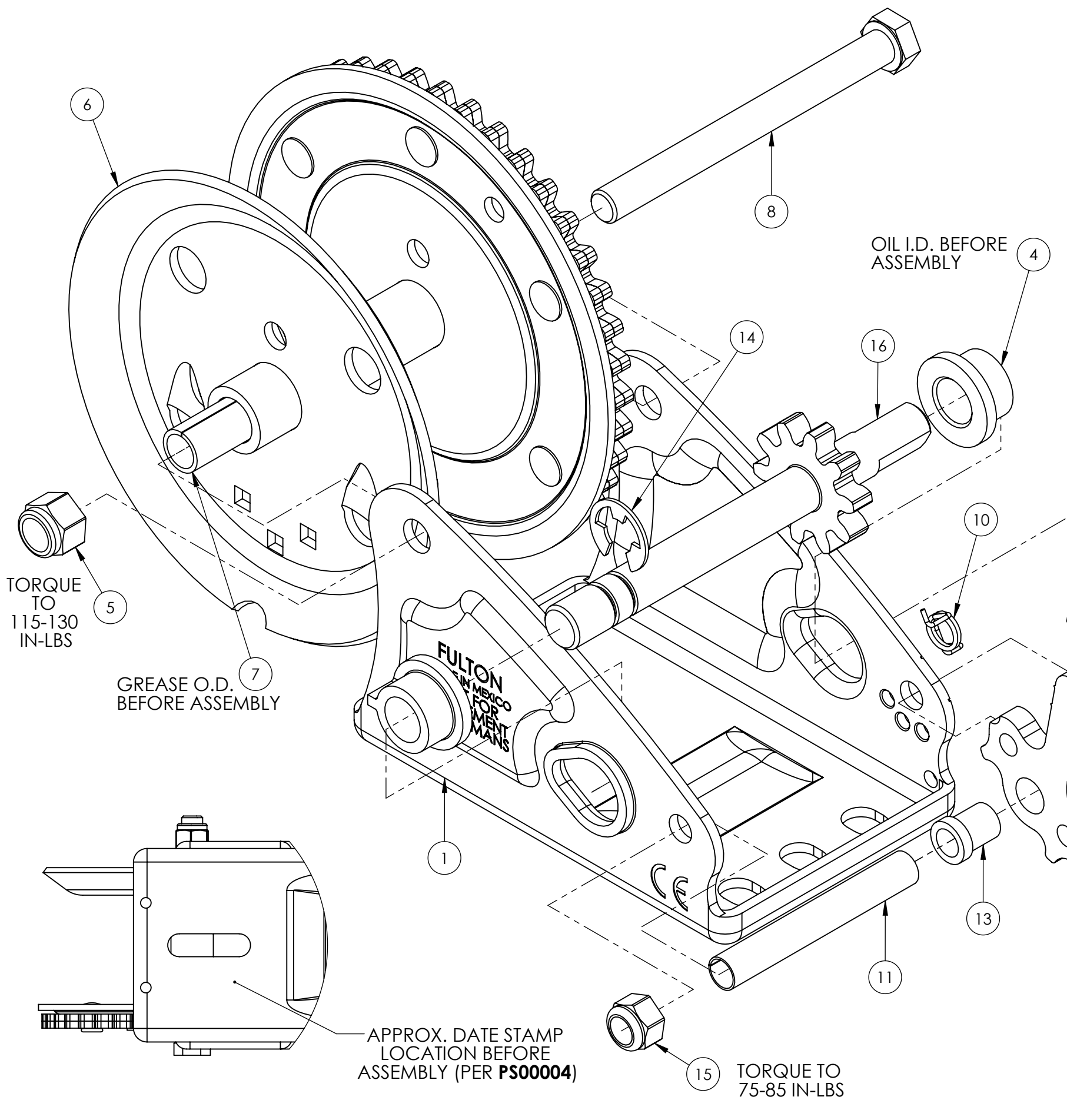
CAPACITY:
- 1100 LBS. 1ST LAYER
- 550 LBS. FULL DRUM



REV.	DESCRIPTION	PCN	BY	DATE
K	REMOVED 0131802-00 & 0131118-01; ADDED 0131124-01, 0143108-01, 0142101-00, 0141107-01 & 4769-28	18416	KLI	3/1/2013
J	0115338 WAS 0115321, ADD F3800 DECAL, REMOVE C.O.O. DECAL, ADD CAPACITIES NOTE	18506	KLI	2/13/2013
I	NOW A FG SPECIFIC DRAWING, WAS 0115134	16647	DLW	02/08/12

KEY CHARACTERISTICS KO DO NOT DIMINISH THE SUPPLIERS RESPONSIBILITY TO REVIEW ALL ASPECTS OF THE DESIGN.	
THIS DRAWING IS THE PROPERTY OF CEQUENT TRAILER PRODUCTS, ALL INFORMATION THEREON IS CONFIDENTIAL AND MUST NOT BE MADE PUBLIC, NOR COPIED, NOR USED TO THE DISADVANTAGE OF CEQUENT TRAILER PRODUCTS, AND IS SUBJECT TO RETURN ON DEMAND.	
DIMENSIONAL TOLERANCES UNLESS OTHERWISE SPECIFIED: DECIMALS: .X = ± .015 .XX = ± .010 .XXX = ± .005 ANGULAR = ± 2°	DRAWN PH SCALE 1:2 FINISH N/A
DIMENSIONS ARE IN INCHES DO NOT SCALE DRAWING	DATE 1/22/99 HEAT TREAT N/A MATERIAL N/A

	1050 Indianhead Dr. Mosinee, WI 54455 PH (715) 693-1700 FX (715) 693-1799	
	DRAWING TITLE WINCH-1100LB-BOXED/6	
SIZE B	DRAWING NUMBER T1100 0101	REVISION K



ITEM	PART NO.	FINISH	DESCRIPTION	QTY.
1	0115338	01	FRAME - T1100/T1300/T1500	1
2	0142101	00	CAP-RUBBER, 2-WAY RATCHET	1
3	0141107	01	RATCHET PAWL-2 WAY W/SHOULDER	1
4	0143101	01	BUSHING P/M - .50 ID	2
5	0527047	01	NUT-3/8-16 HEX NYLOK	1
6	8850	01	DRUM 41-TOOTH	1
7	0131116	00	SPACER-SPLIT .485 OD X .383 ID X 3.207 LG	1
8	4148	01	HEX CAP SCREW 3/8-16 X 4.0 LG GR2	1
9	0927021	01	LOCKNUT - 1/2-13 NYLON INSERT JAM	1
10	4769	28	SPRING - RATCHET, TWO-WAY	1
11	0131124	01	SPACER-SPLIT .372 OD X .327 ID X 2.632 LG	1
12	223	01	HEX CAP SCREW 5/16-18 X 4.0 LG GR5	1
13	0143108	01	BUSHING, Ø.480 X .44 LG	1
14	936	24	RETAINING RING - 1/2" DIA SHAFT	1
15	0427004	01	LOCKNUT - 5/16-18 NYL INS	1
16	0169003	41	PINION GEAR AND SHAFT	1
17	F3800	00	DECAL - FULTON WINCH - SMALL (REF. SHEET 1)	1

HAND
TIGHTEN
ONLY

TORQUE
TO
115-130
IN-LBS

GREASE O.D.
BEFORE ASSEMBLY

OIL I.D. BEFORE
ASSEMBLY

APPROX. DATE STAMP
LOCATION BEFORE
ASSEMBLY (PER PS00004)

TORQUE TO
75-85 IN-LBS

NOTES:


- DRUM MUST TURN AT LEAST ONE FULL REVOLUTION BY HAND IN BOTH DIRECTIONS.
- ALL TORQUE VALUES ARE FOR REFERENCE ONLY.

SHEET 2 OF 2

KEY CHARACTERISTICS **DO NOT** DIMINISH THE SUPPLIERS RESPONSIBILITY TO REVIEW ALL ASPECTS OF THE DESIGN.

THIS DRAWING IS THE PROPERTY OF CEQUENT TRAILER PRODUCTS. ALL INFORMATION THEREON IS CONFIDENTIAL AND MUST NOT BE MADE PUBLIC. NOR COPIED, NOR USED TO THE DISADVANTAGE OF CEQUENT TRAILER PRODUCTS, AND IS SUBJECT TO RETURN ON DEMAND.

DIMENSIONAL TOLERANCES UNLESS OTHERWISE SPECIFIED: DECIMALS: .X = ± .015 .XX = ± .010 .XXX = ± .005 ANGULAR = ± 2°	DRAWN	PH	DATE	1/22/99
	SCALE	1:2	HEAT TREAT	N/A
	FINISH	N/A		
DIMENSIONS ARE IN INCHES	MATERIAL	N/A		
DO NOT SCALE DRAWING				

 1050 Indianhead Dr. Mosinee, WI 54455 PH (715) 693-1700 FX (715) 693-1799	DRAWING TITLE	
	WINCH-1100LB-BOXED/6	
SIZE	DRAWING NUMBER	REVISION
B	T1100 0101	K